

INFORMATION TECHNOLOGY TRAINING MANUAL

**GNUPG
INSTALLATION
AND CONFIGURATION
(DOTD PE OFFICES)**

RELEASE: FEBRUARY 22, 2007

PREPARED BY:

SARAH COLLINS
(225) 379-1619 - LINC: 8-425-1619

**LOUISIANA
DEPARTMENT OF TRANSPORTATION AND DEVELOPMENT
INFORMATION TECHNOLOGY**

GnuPG Installation and Configuration

Table of Contents

Table of Contents	2
Introduction:	3
Need Help?.....	3
Installation	4
Installing GPG4Win:	4
Configuring GnuPG	5
Editing the Registry:	5
Editing the Environmental Path:	6

GnuPG Installation and Configuration

Introduction:

Contractors, doing business with DOTD, can now electronically submit their certified “contractor” payrolls to DOTD. It will be the contractor’s responsibility to create, encrypt, and email their payrolls to the Project Engineers office. The Project Engineer’s office will receive, decrypt and review the payrolls. Once the payrolls are approved, they will import the payrolls into Content Manager.

For security reasons, DOTD will only accept TIFF or PDF payroll documents. Contractors will be required to encrypt any payroll file, using the Project Engineer’s office public key, before it is email to DOTD.

GNUPG is “Open Source” encryption software program, which allows DOTD freely use, modify, and distribute. It uses Public and Private Keys. Public keys are used to encrypt a file and Private keys are used to decrypt a file.

Only the Project Engineer’s Public Key should be distributed.

The following instructions are for installing GPG4Win, which is only supported by the Windows Operating system. If you are using another operating system, you will need to obtain a GPG compatibly program. The “open source” GnuPG program is available from this link:

<http://www.gnupg.org/>

Need Help?

If you need assistance with the installing the program, defining a key, decrypting documents, or Content Manager; you may contact Sarah Collins at (225) 379-1619 or User Support at (225) 379-1690.

GnuPG Installation and Configuration

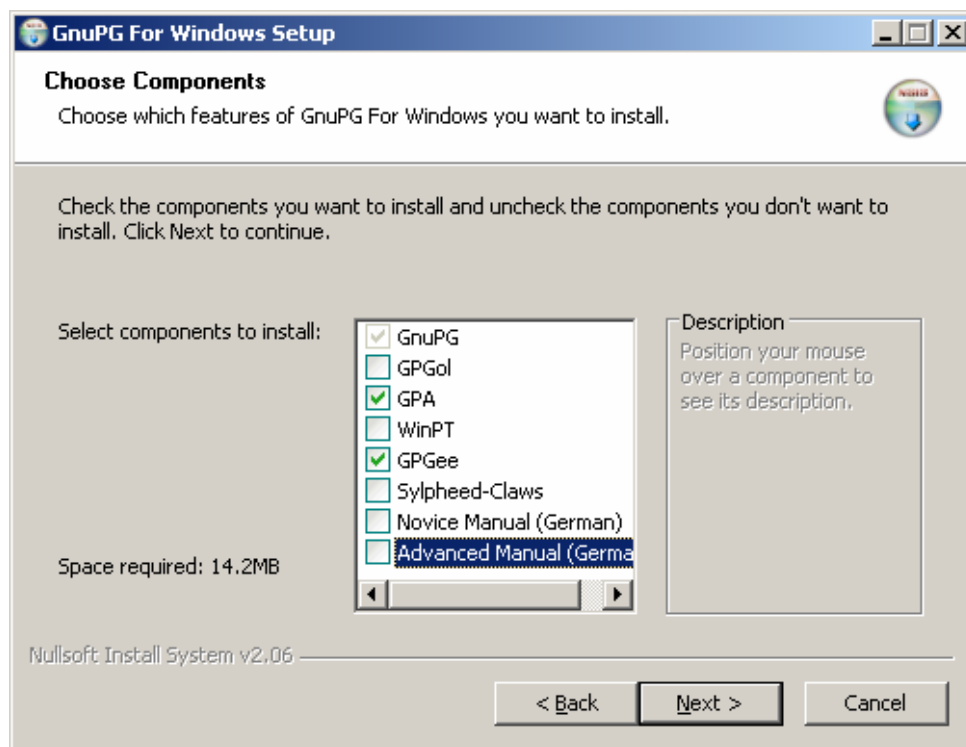
Installation

The GPG4Win software is available for download at the DOTD site or the GPG4 Win <http://www.gpg4win.org/> web site.

Installing GPG4Win:

Note: New versions of the GnuPG software are released often. Before installing a new version, uninstall the old version. When GPG4Win installs, GnuPG is also installed.

1. Download the GPG4Win software to the local machine and run the **gpg4win-1.0.5.exe** program.
2. Press **Next** at the Welcome screen and the Licenses screen.
3. When installing the software you only need to check GPA and GPGee, and press **Next**:
 - GnuPG: The core; this is the actual encryption tool
 - GPA: Gnu Privacy Assistance
 - GPGee: A plug-in for Microsoft Explorer (file encryption)



4. On the “Choose Install Location” window, keep the default location when installing the program. Installing the program on a drive other than the C:\ drive may result in errors. Press **Next**.
5. Select the install option, and press **Next**, and then press **Install**.
6. After the program is installed, press **Next** and then **Finish**.

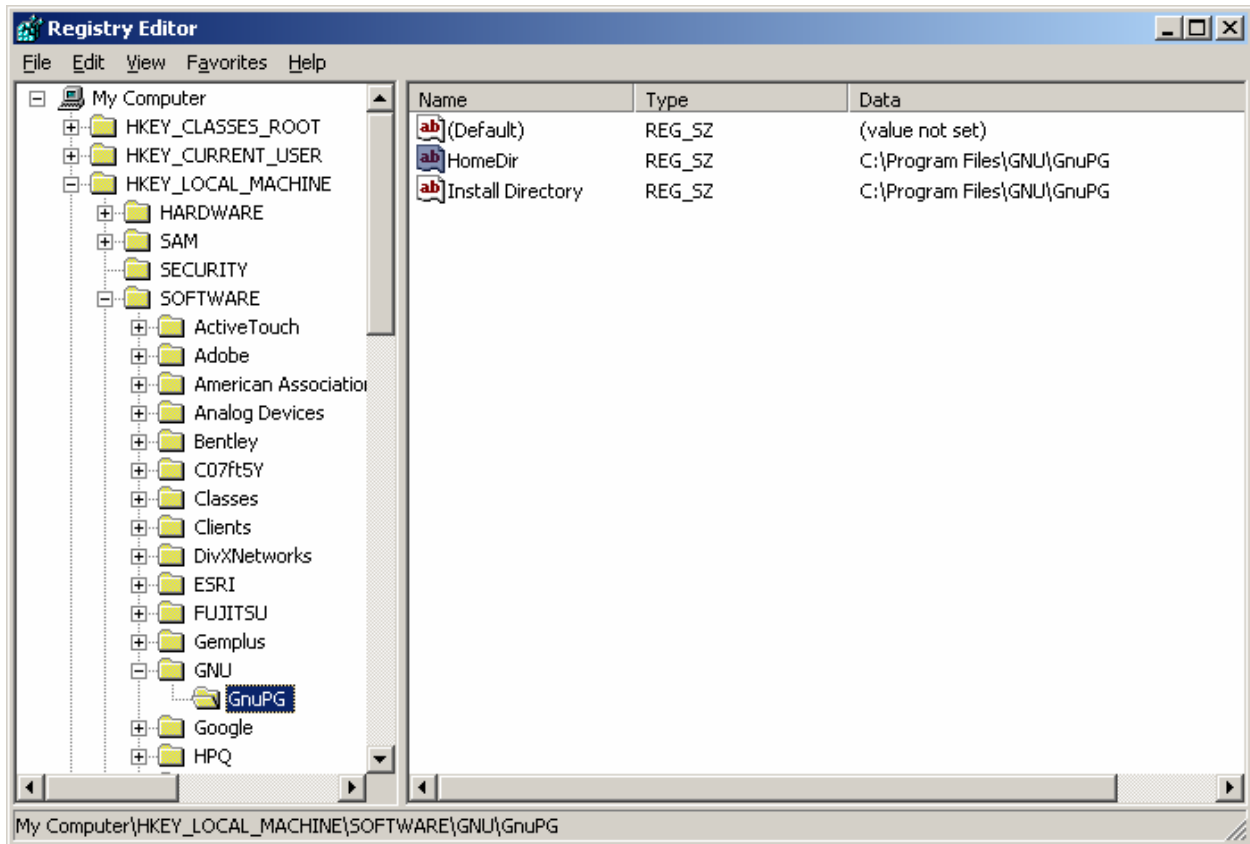
GnuPG Installation and Configuration

Configuring GnuPG

Editing the Registry:

Placing the following entry into the registry will make the Public and Private keys easier to located.

1. Select **Start** → **Run** → type **regedit**
2. Add a new String value to the Registry.
 - Path: HKEY_LOCAL_MACHINE\SOFTWARE\GNU\GnuPG
 - String: HomeDir
 - Value: (Location where you would like your Public and Private Key store) It can be the same as the Install Directory. Example: C:\Program Files\GNU\GnuPG



GnuPG Installation and Configuration

Editing the Environmental Path:

Editing the Environmental Path statement allows users to run GPG command from the command prompt without having to browse to the program location.

1. Add the program location to the Environmental Path value.
 - Right-click on My Computer and select **Properties** → **Advanced** → **Environmental Variables** → **Path** under System Variables → **Edit**
 - Add to the end of the string, without the quotes: “; C:\Program Files\GNU\GnuPG”

