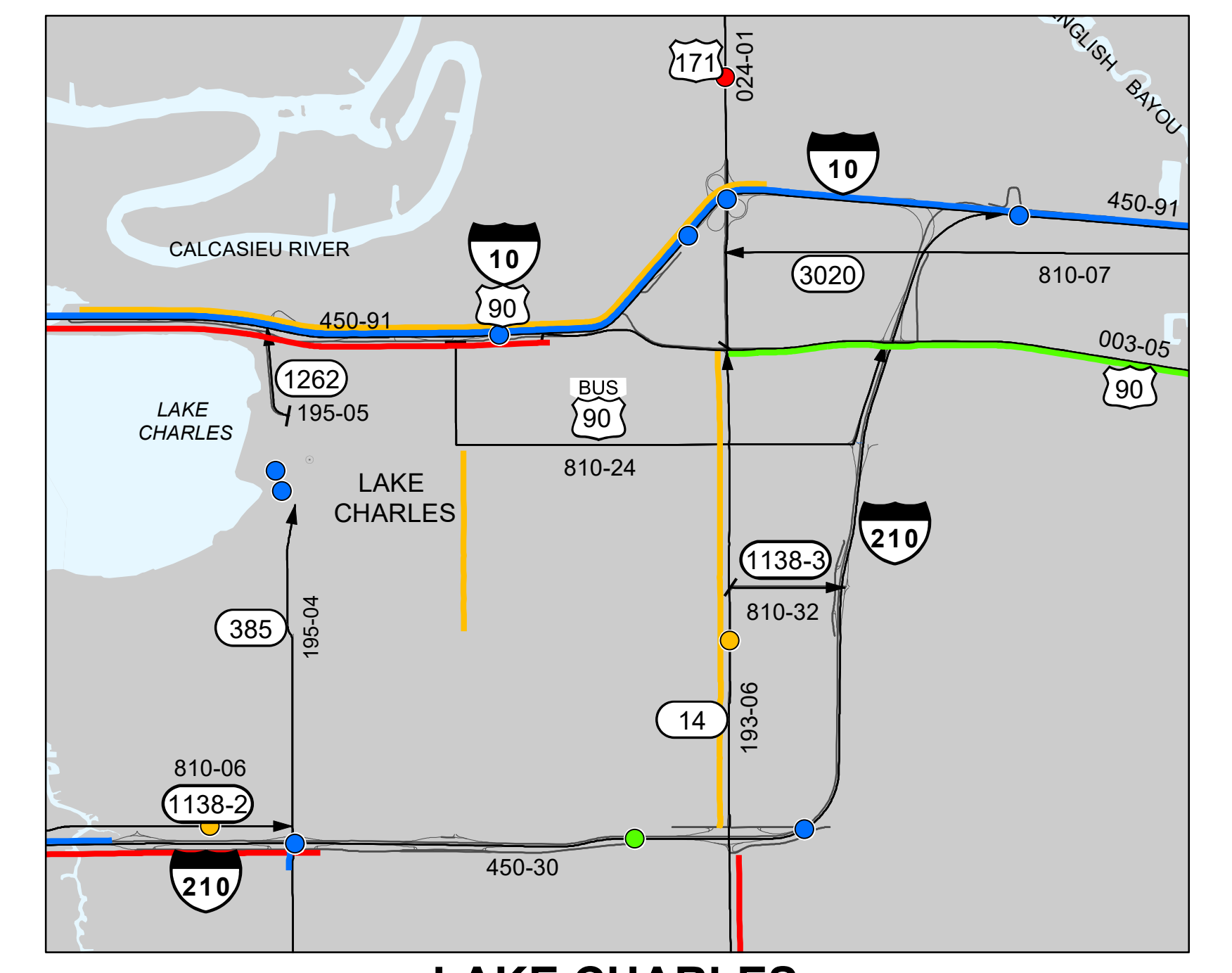
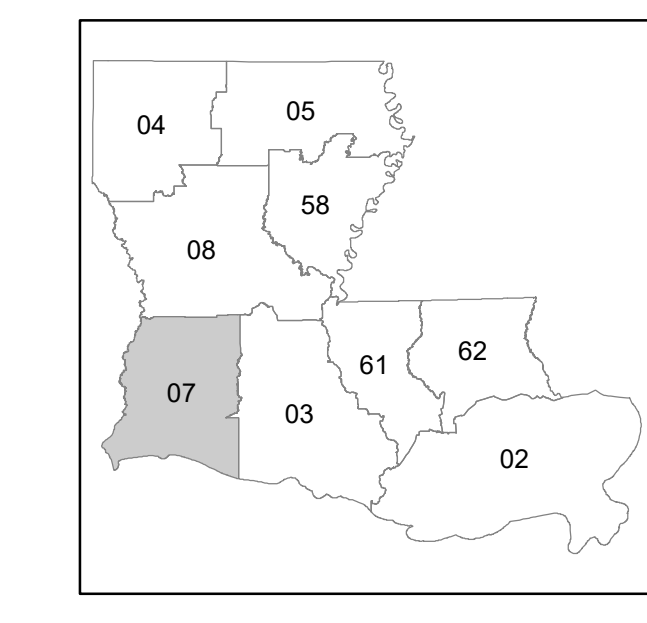
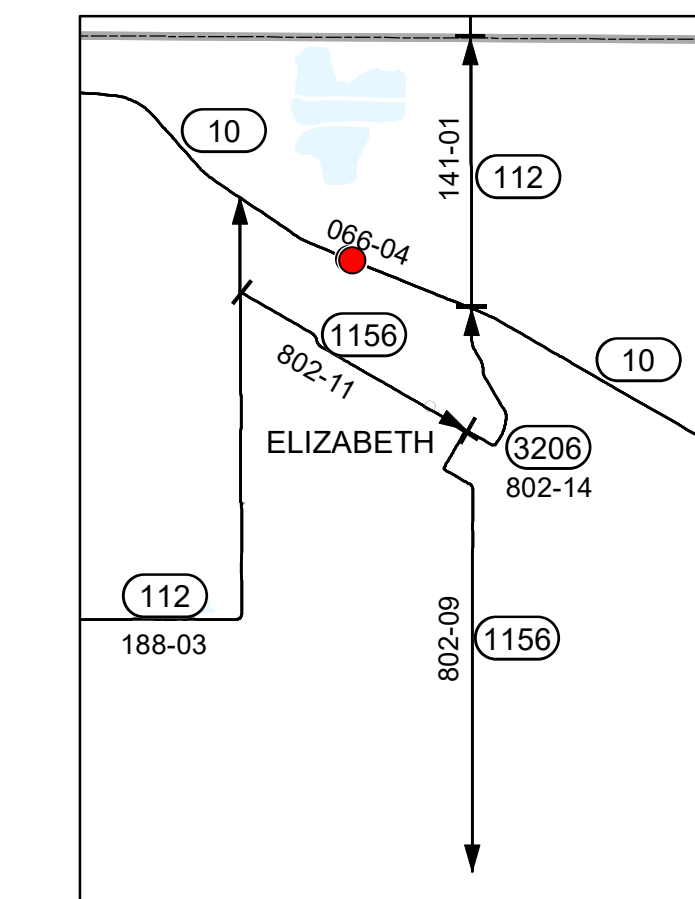


TEXAS

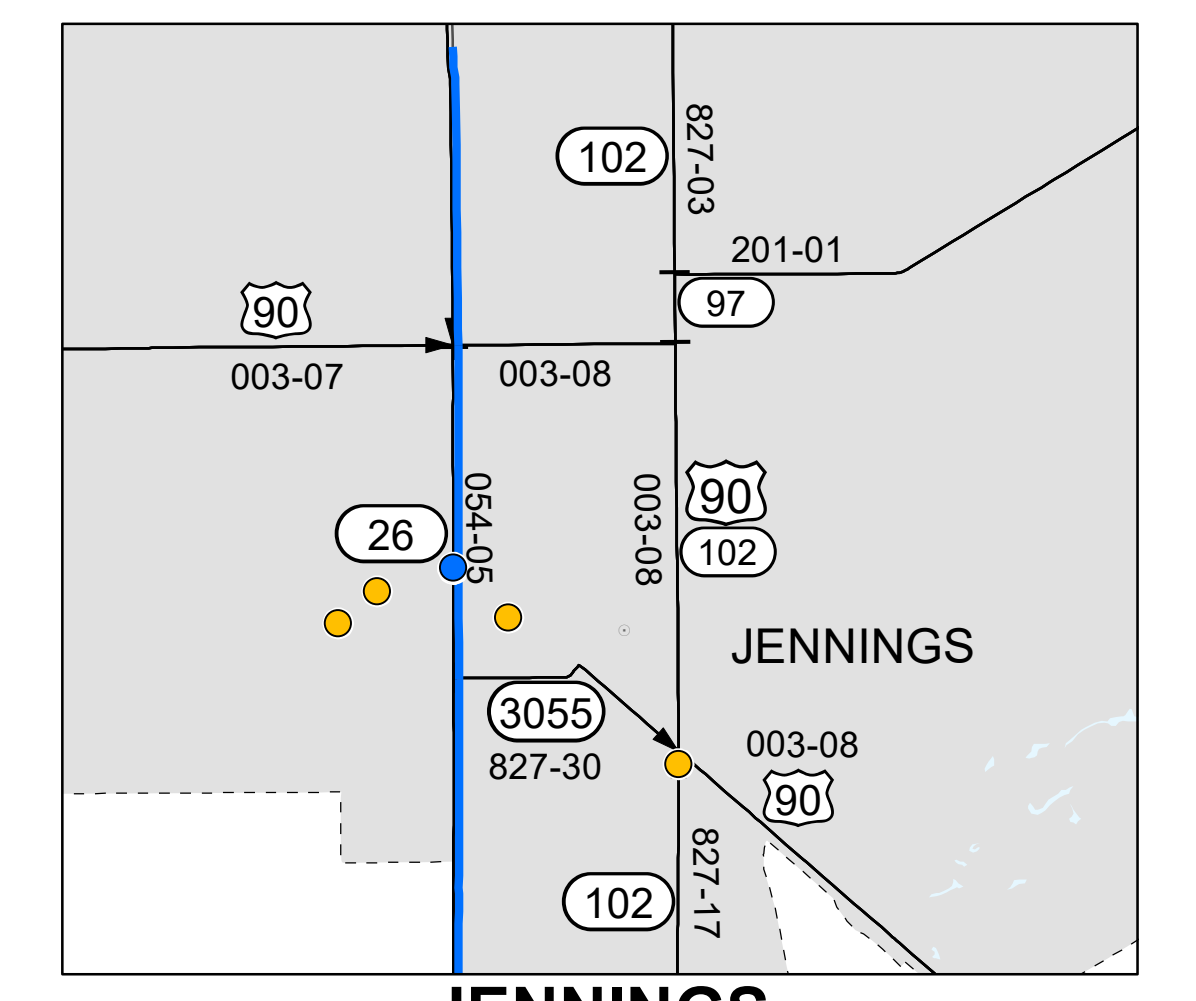
- PARISH SEATS
- MUNICIPALITIES
- COMMUNITIES
- PROJECTS LET BETWEEN JULY 2015 AND SEPTEMBER 2020
- PROJECTS TO BE LET BETWEEN OCTOBER 2020 AND JUNE 2021
- PROJECTS SCHEDULED TO BE LET IN SFY 21-22 (Next Fiscal Year)
- OTHER PROJECTS BEING DEVELOPED
- CONTROL SECTIONS / STATE ROUTES
- FERRY BOATS
- PARISH LINES
- URBANIZED AREAS
- URBAN AREAS



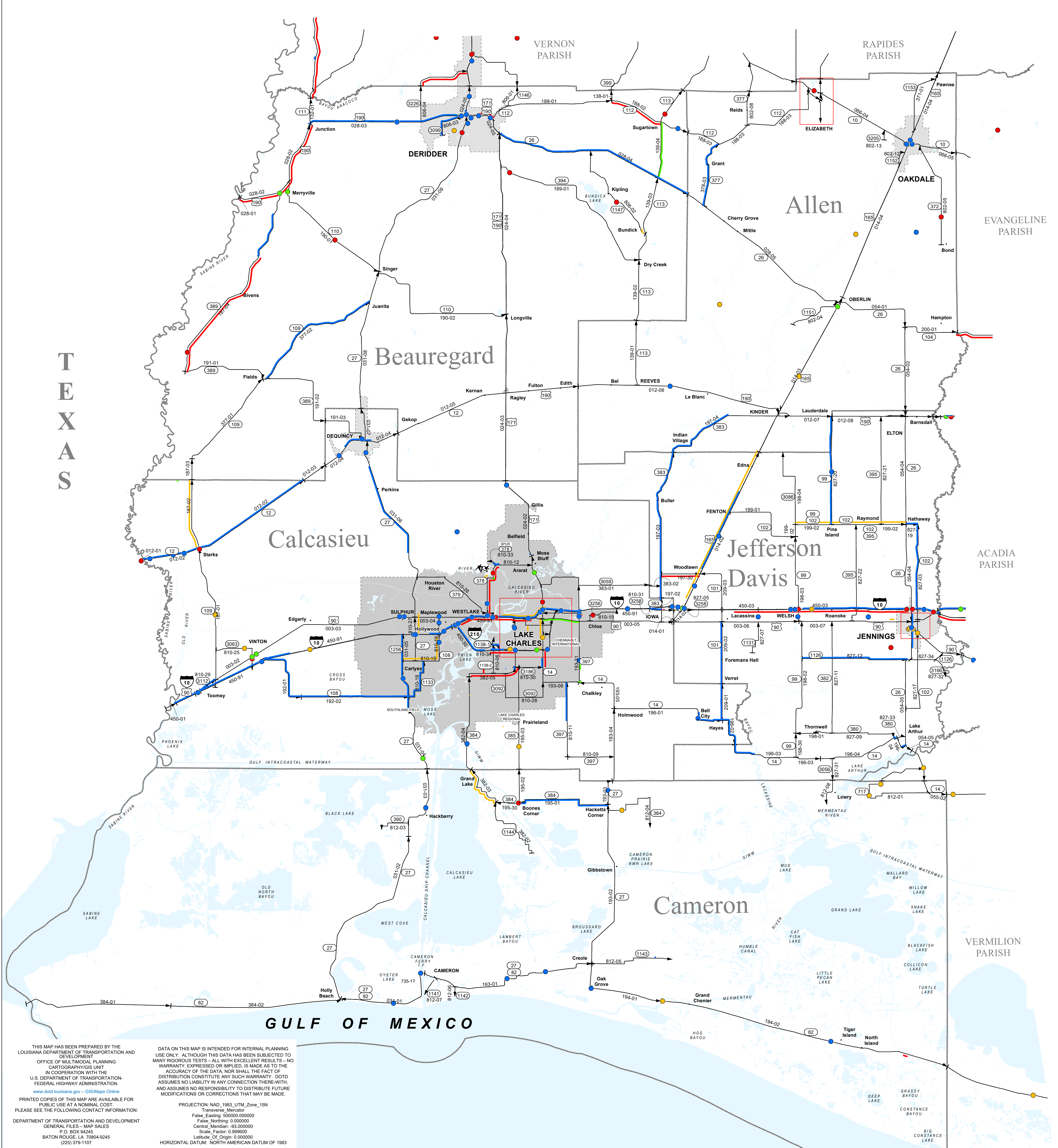
LAKE CHARLES



ELIZABETH

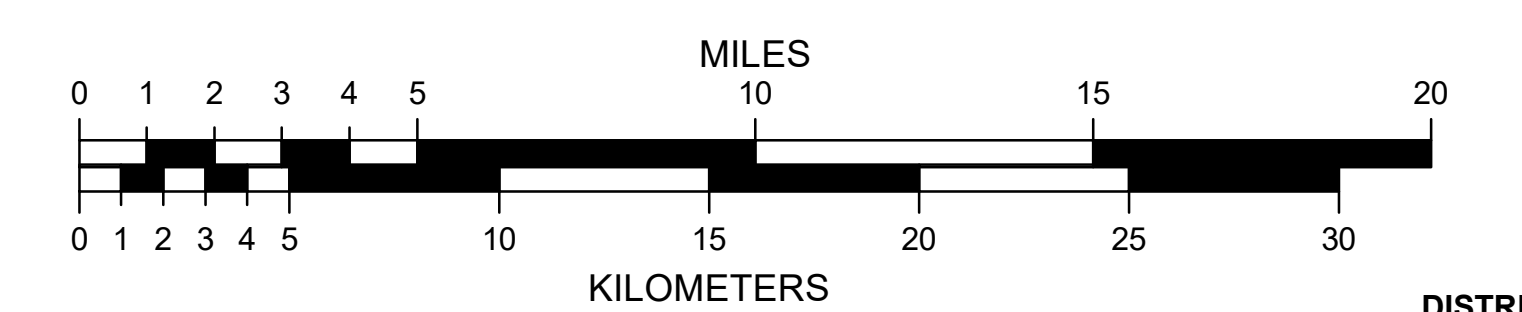
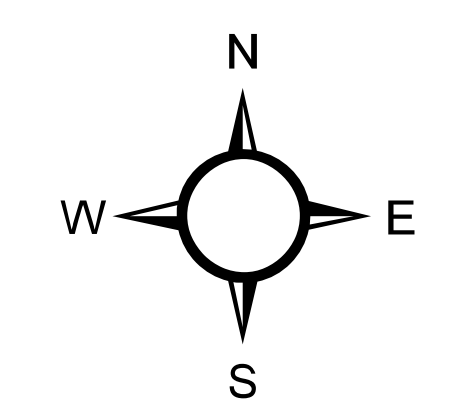


JENNINGS



MAPS FOR LEGISLATIVE PUBLIC HEARINGS FOR SFY 2021-2022 HIGHWAY PRIORITY PROGRAM

DISTRICT 07



THIS MAP HAS BEEN PREPARED BY THE LOUISIANA DEPARTMENT OF TRANSPORTATION AND DEVELOPMENT OFFICE OF MULTIMODAL PLANNING CARTOGRAPHY/ISSUES UNIT IN COOPERATION WITH THE U.S. DEPARTMENT OF TRANSPORTATION FEDERAL HIGHWAY ADMINISTRATION. www.dotd.louisiana.gov - GIS/Maps Online

PRINTED COPIES OF THIS MAP ARE AVAILABLE FOR PUBLIC USE AT A NOMINAL COST. PLEASE SEE THE FOLLOWING CONTACT INFORMATION: DEPARTMENT OF TRANSPORTATION AND DEVELOPMENT GENERAL FILES - MAP SALES P.O. BOX 94245 BATON ROUGE, LA 70804-9245 (225) 379-1107

DATA ON THIS MAP IS INTENDED FOR INTERNAL PLANNING USE ONLY. ALTHOUGH THIS DATA HAS BEEN SUBJECTED TO MANY RIGOROUS TESTS - ALL WITH EXCELLENT RESULTS - NO WARRANTY, EXPRESSED OR IMPLIED, IS MADE AS TO THE ACCURACY OF THE DATA, NOR SHALL THE FACT OF DISTRIBUTION CONSTITUTE ANY SUCH WARRANTY. DOTD ASSUMES NO LIABILITY IN ANY CONNECTION THEREWITH, AND ASSUMES NO RESPONSIBILITY TO DISTRIBUTE FUTURE MODIFICATIONS OR CORRECTIONS THAT MAY BE MADE.

PROJECTION: NAD\_1983\_UTM\_Zone\_15N  
 Transverse Mercator  
 False\_Easting: 500000.000000  
 False\_Northing: 0.000000  
 Central\_Meridian: -93.000000  
 Scale\_Factor: 0.999600  
 Latitude\_Of\_Origin: 0.000000  
 HORIZONTAL DATUM: NORTH AMERICAN DATUM OF 1983