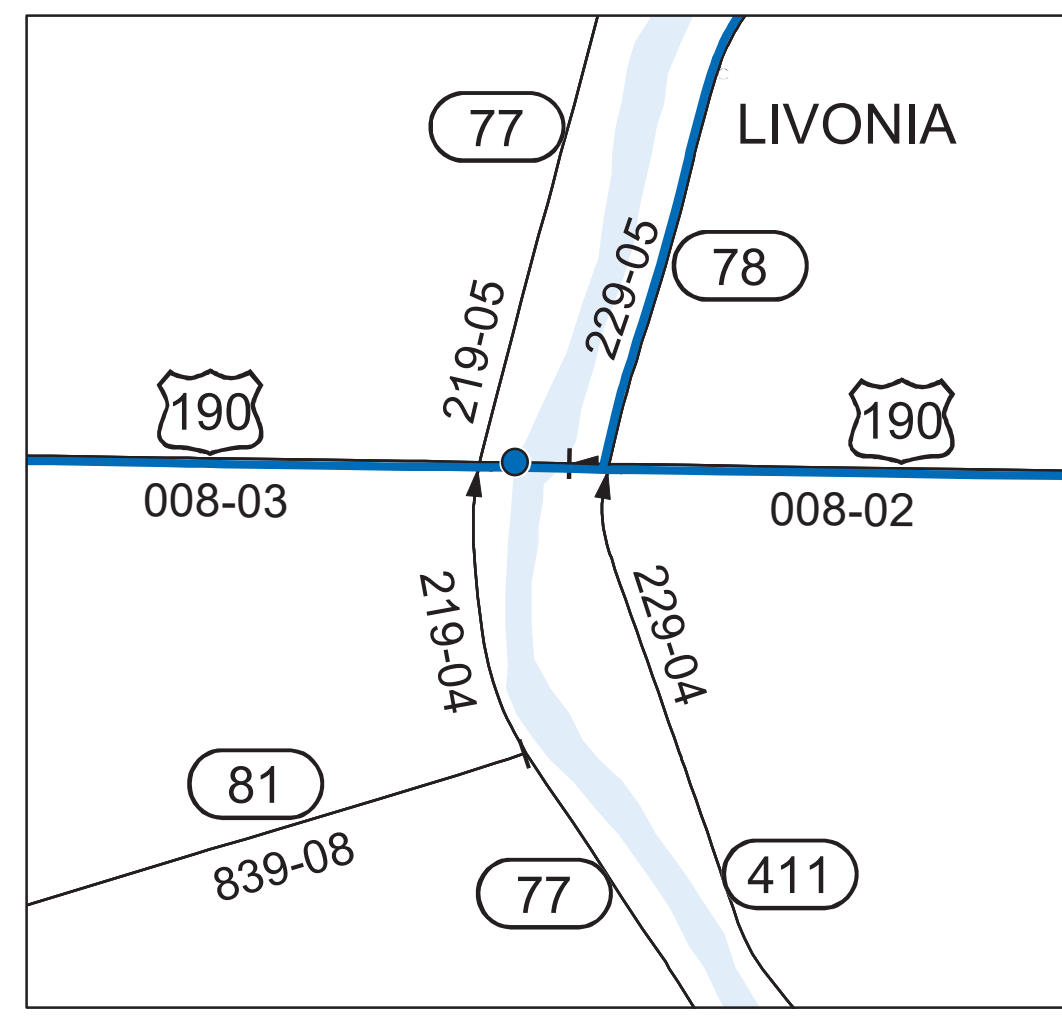
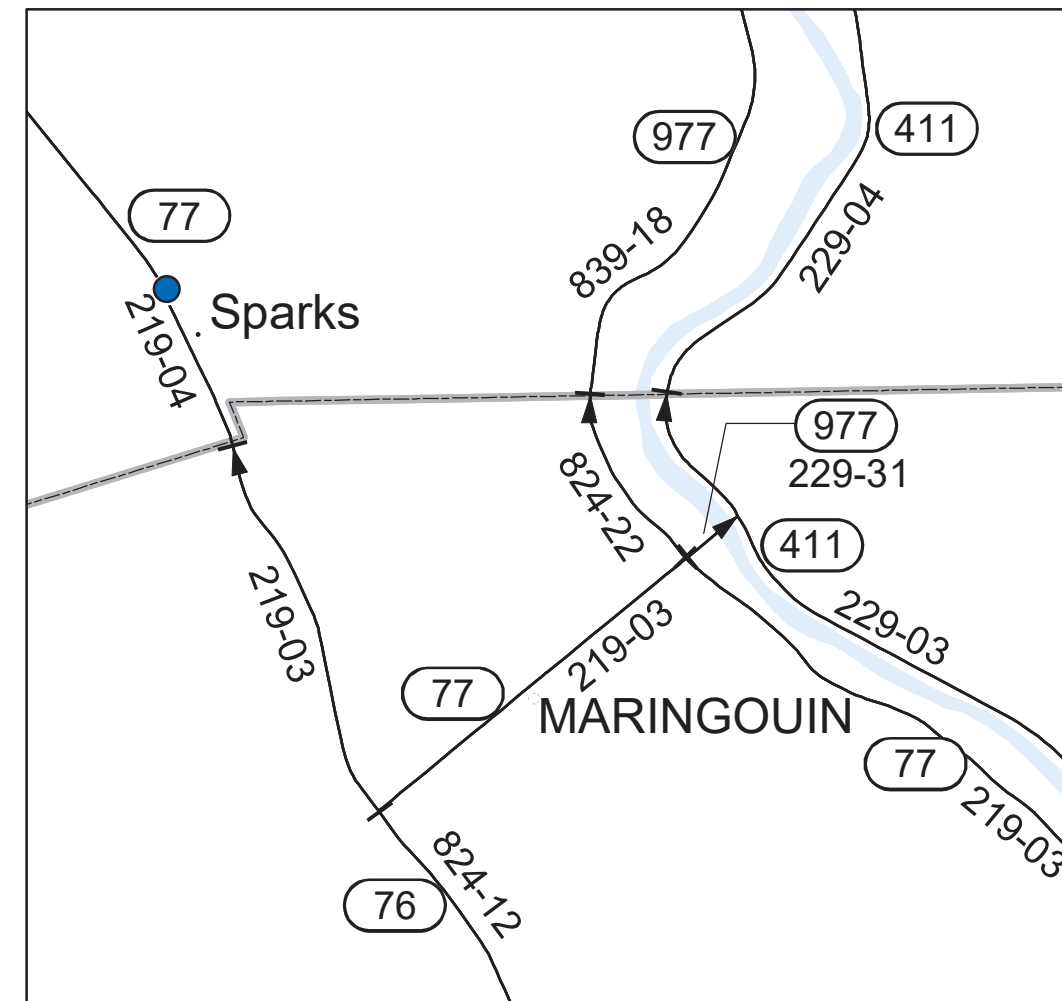


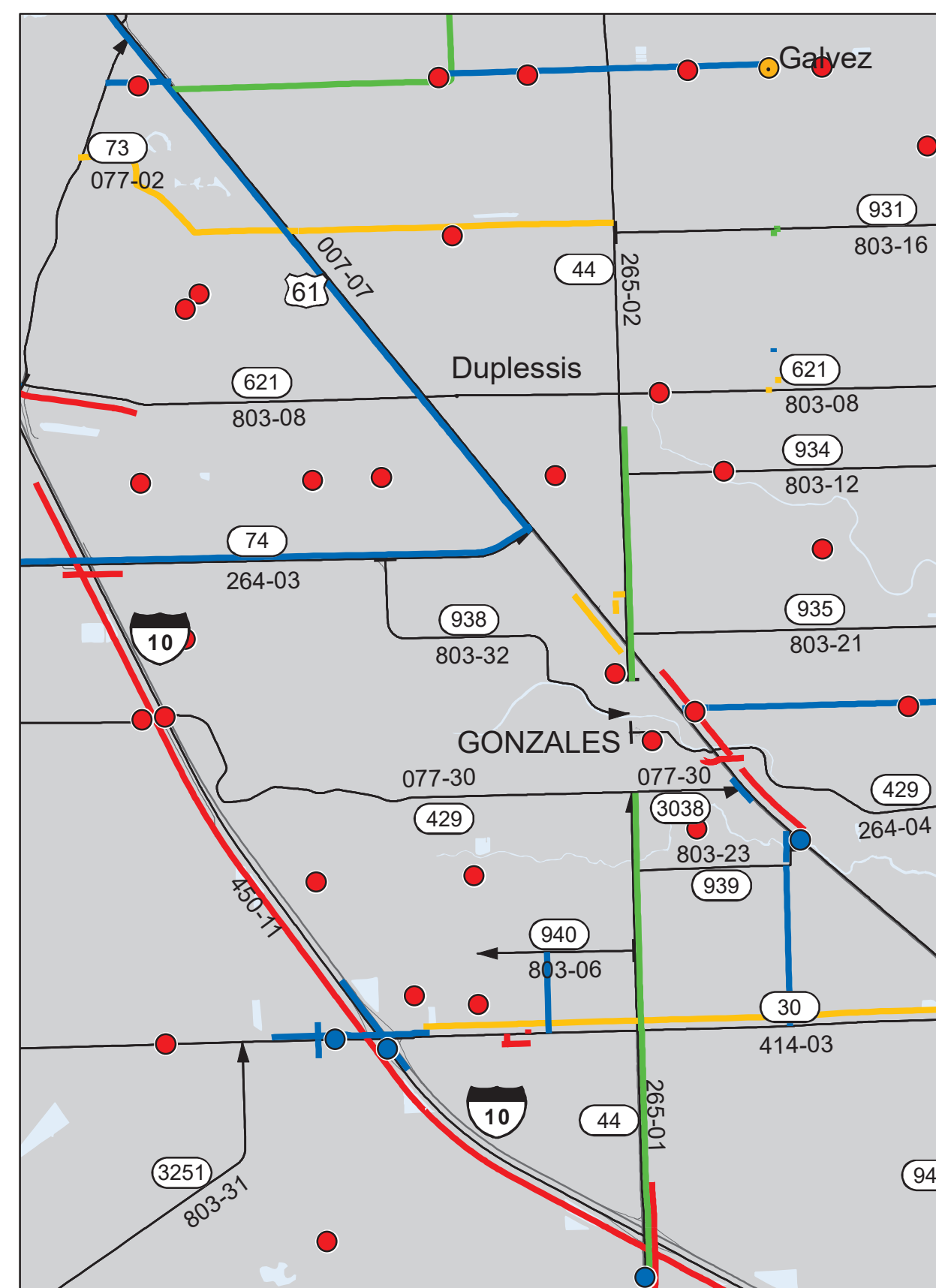
# MISSISSIPPI



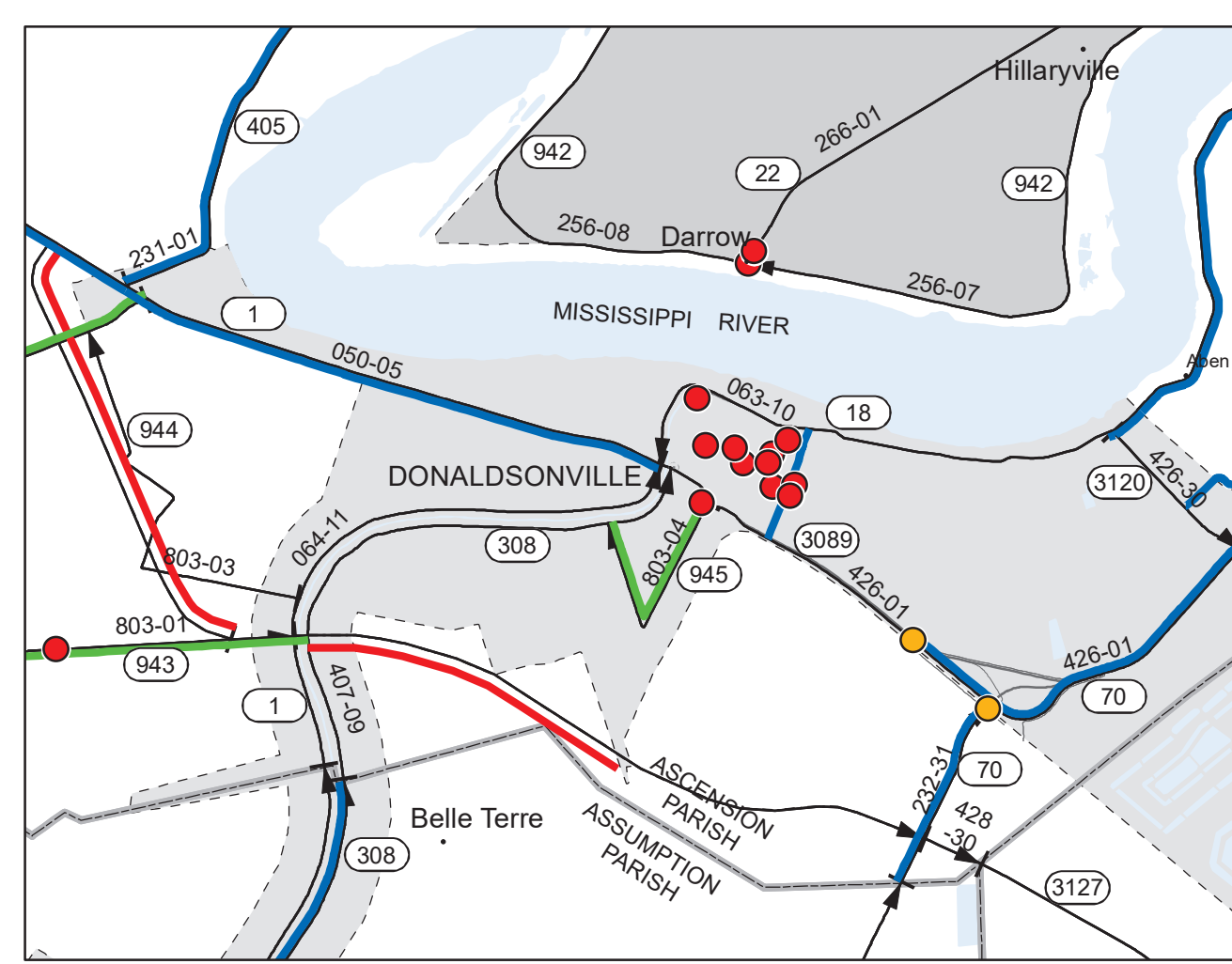
LIVONIA



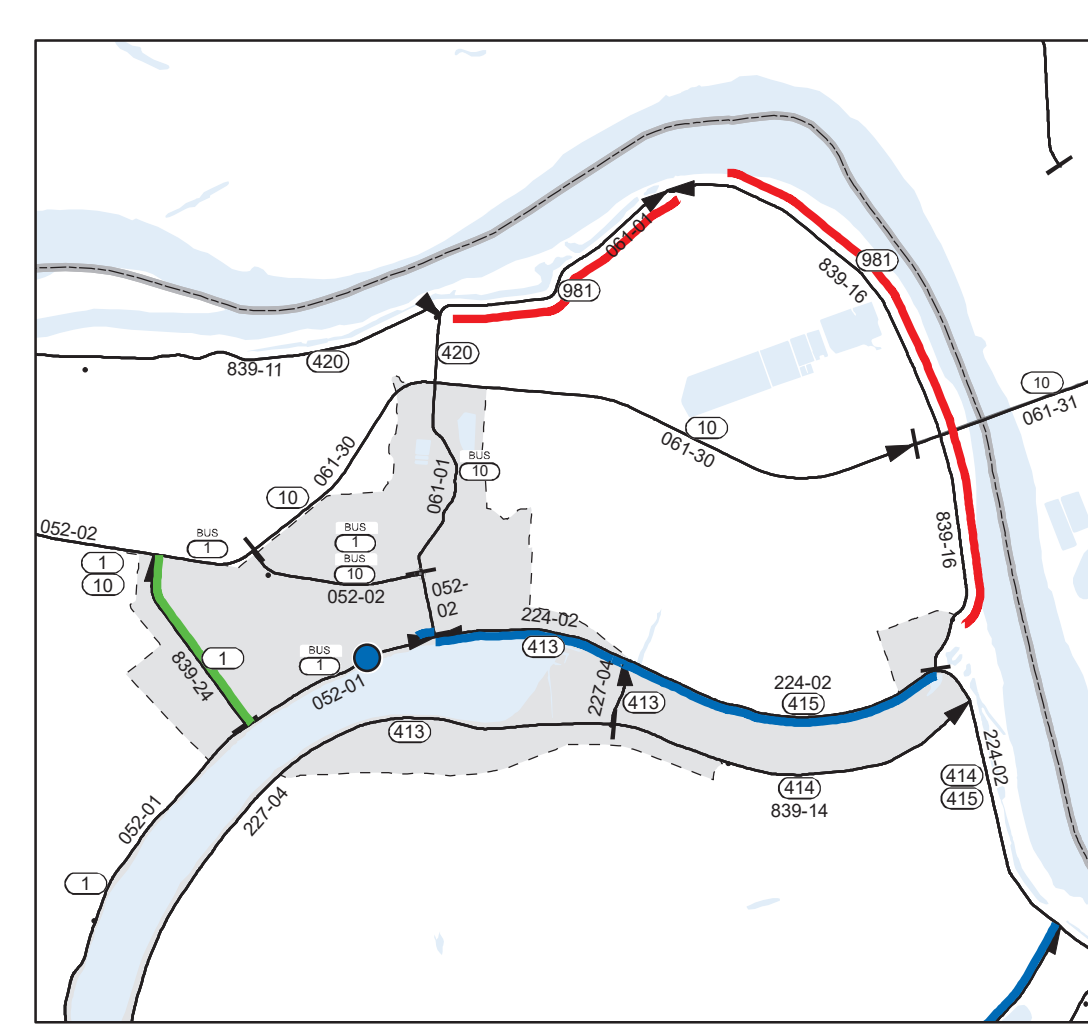
MARINGOUI



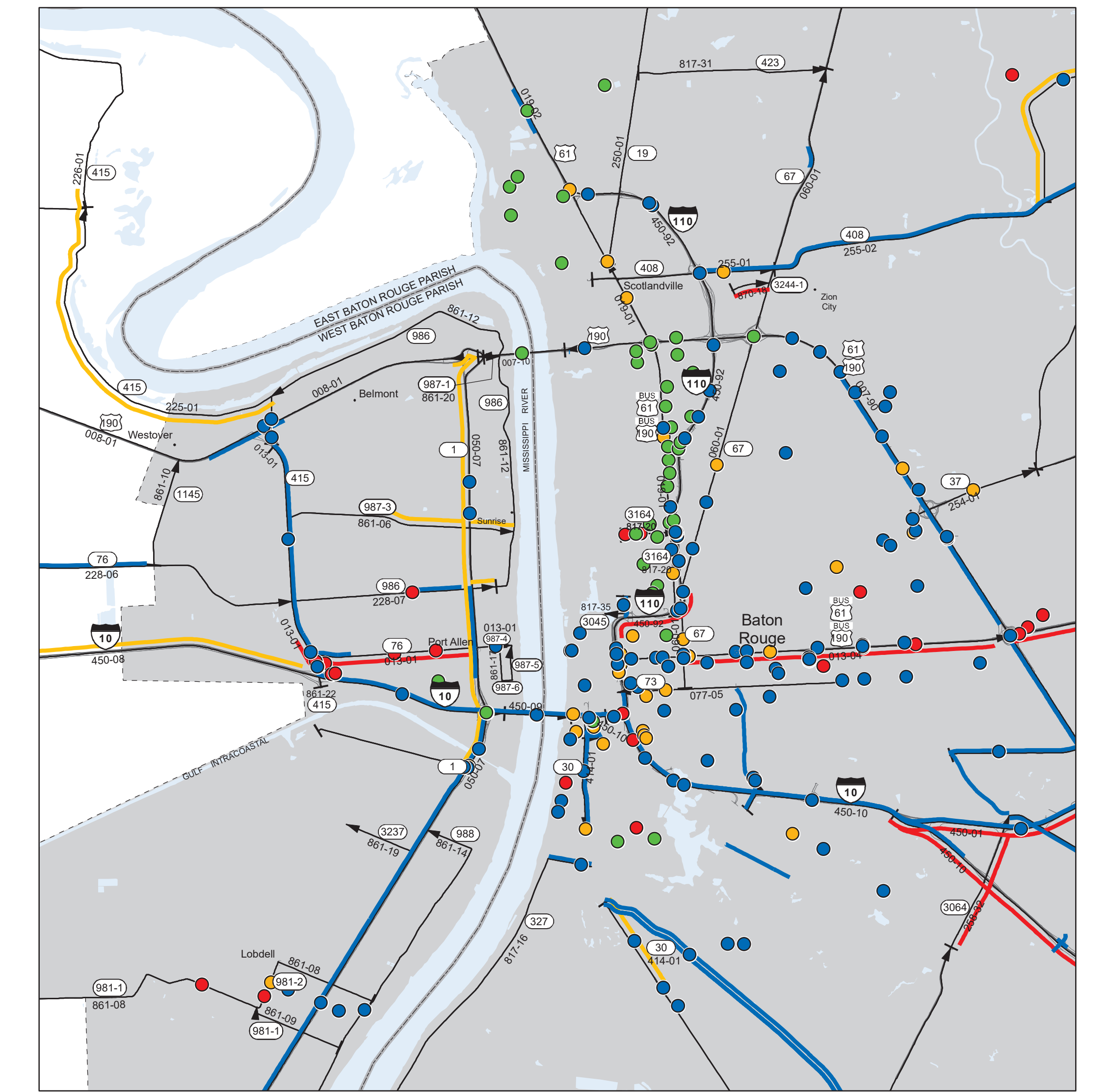
GONZALES



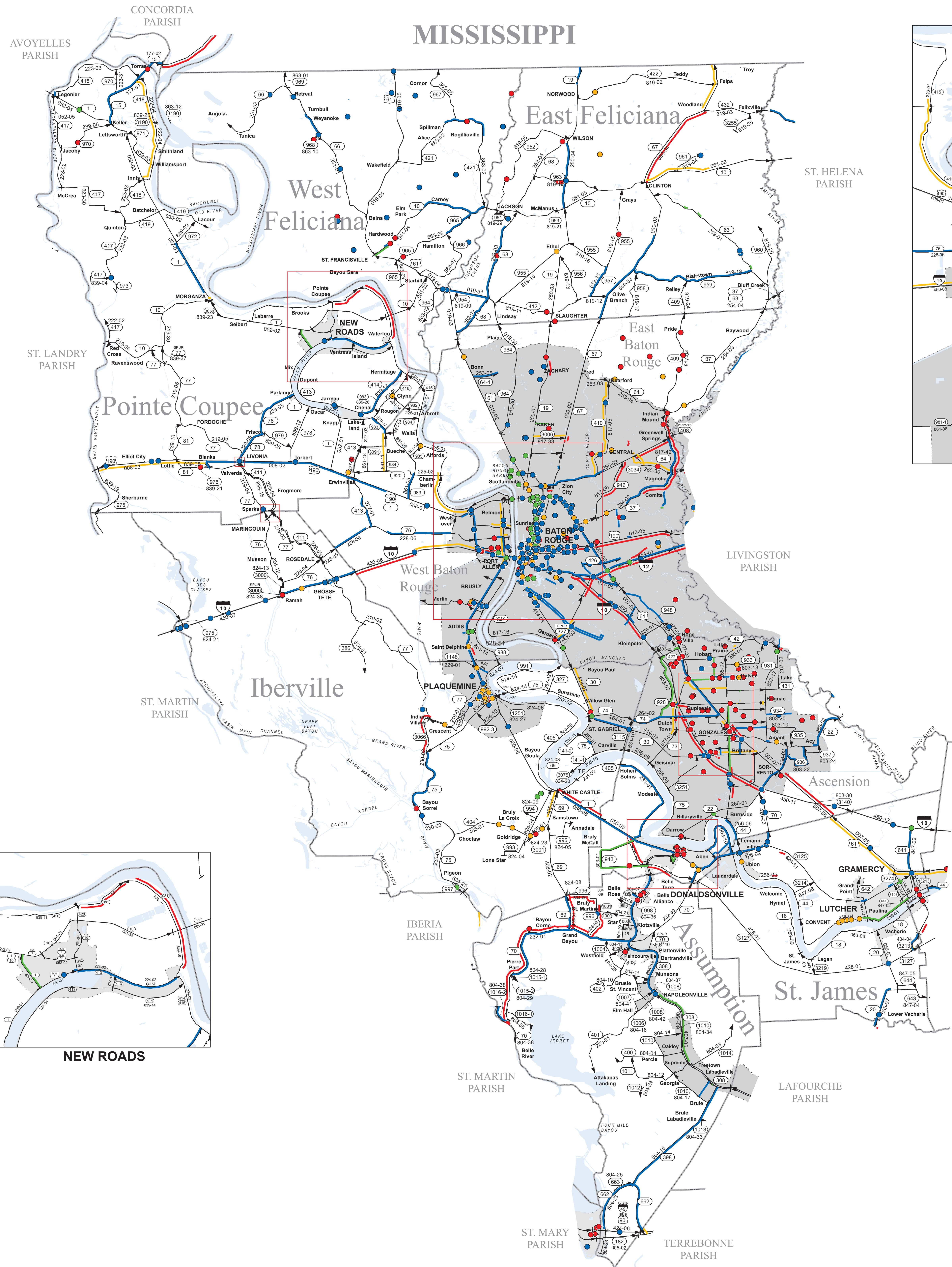
DONALDSONVILLE



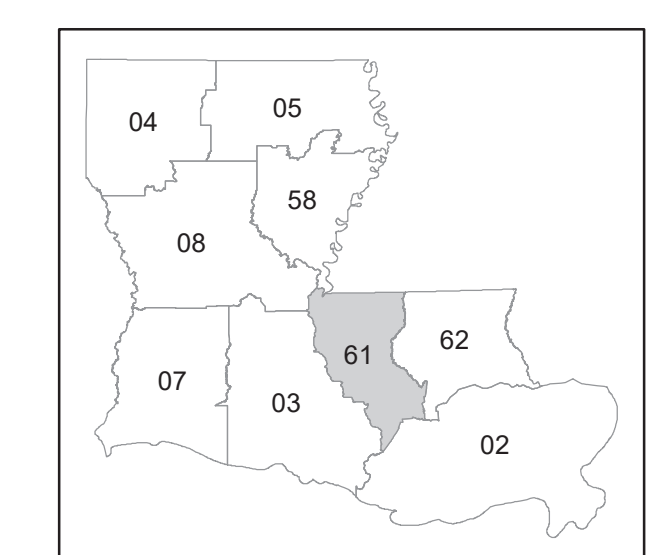
NEW ROADS



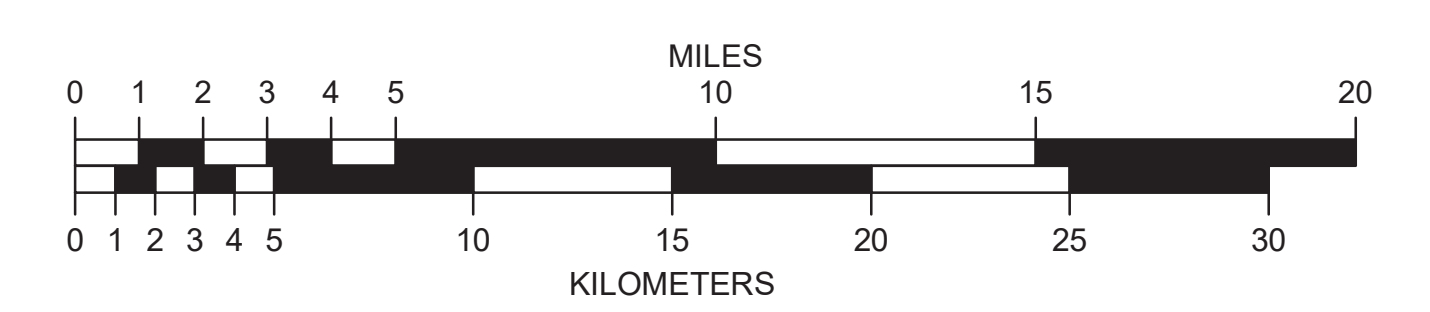
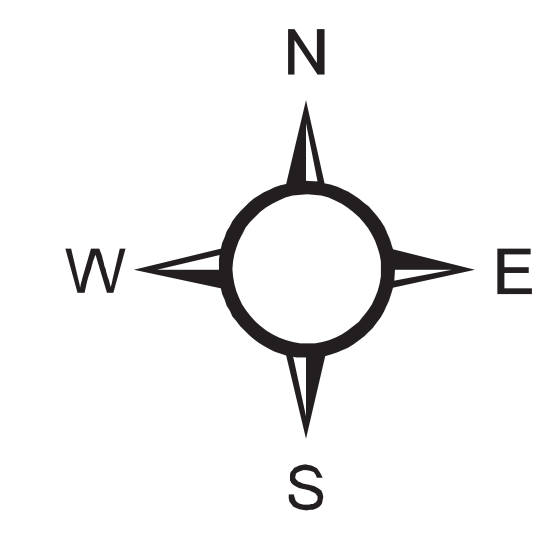
BATON ROUGE



- PARISH SEATS
- MUNICIPALITIES
- COMMUNITIES
- PROJECTS LET BETWEEN JULY 2018 AND DECEMBER 2023
- PROJECTS TO BE LET BETWEEN JANUARY 2024 AND JUNE 2024
- PROJECTS SCHEDULED TO BE LET IN SFY 24-25 (Next Fiscal Year)
- OTHER PROJECTS BEING DEVELOPED
- CONTROL SECTIONS / STATE ROUTES
- PROPOSED ROADS
- FERRY BOATS
- PARISH LINES
- URBANIZED AREAS
- URBAN AREAS



Map Updated: February 2024



MAPS FOR LEGISLATIVE PUBLIC HEARINGS FOR SFY 2024-2025 HIGHWAY PRIORITY PROGRAM DISTRICT 61

THIS MAP HAS BEEN PREPARED BY THE LOUISIANA DEPARTMENT OF TRANSPORTATION AND DEVELOPMENT OFFICE OF PLANNING GIS MAPPING UNIT IN COOPERATION WITH THE U.S. DEPARTMENT OF TRANSPORTATION FEDERAL HIGHWAY ADMINISTRATION www.dotd.louisiana.gov - GIS Maps Office PRINTED COPIES OF THIS MAP ARE AVAILABLE FOR PUBLIC USE AT A NOMINAL COST. PLEASE SEE THE FOLLOWING CONTACT INFORMATION: DEPARTMENT OF TRANSPORTATION AND DEVELOPMENT SECTION 26, ENTERPRISE SUPPORT SERVICES. RMJ - MAP SALES P.O. BOX 9426 BATON ROUGE, LA 70804-9426 (225) 379-1107 or (225) 379-1190

DATA ON THIS MAP IS PREPARED BY GIS PROFESSIONALS INTENDED FOR INTERNAL PLANNING USE ONLY. ALTHOUGH THIS DATA IS NOT SURVEY GRADE, IT HAS BEEN SUBMITTED TO MANY RIGOROUS TESTS - ALL WITH EXCELLENT RESULTS - NO WARRANTY, EXPRESSED OR IMPLIED, IS MADE AS TO THE ACCURACY OF THE DATA. NOR SHALL THE FACT OF DISTRIBUTION CONSTITUTE ANY SUCH WARRANTY. DOTD ASSUMES NO LIABILITY IN ANY CONNECTION THEREWITH, AND ASSUMES NO RESPONSIBILITY TO DISTRIBUTE FUTURE MODIFICATIONS OR CORRECTIONS THAT MAY BE MADE.

PROJECTION: NAD\_1983\_UTM\_Zone\_18N  
 Transverse\_Mercator  
 False\_Scaling: 500000.000000  
 False\_Northing: 0.000000  
 Central\_Meridian: -93.000000  
 Scale\_Factor: 0.999600  
 Latitude\_Of\_Origin: 0.000000  
 HORIZONTAL DATUM: NORTH AMERICAN DATUM OF 1983