

# STATE WIDE SIGN GUIDE

- **This guide will demonstrate various sign mounting products and procedures for construction and maintenance.**

# Ground Mount Base Omni Direction

## Manufacturer Requirements:

- 1) La One Call Locate Request.
- 2) Dig 42-inch deep hole in ground.
- 3) Hole diameter varies due to soil at location. Min diameter shall be at least 12 inches.
- 4) Fill hole with concrete .
- 5) Top of base must be less than or equal to 3 inches from grade.
- 6) Base will support max. 21 sq. feet.
- 7) These are typically installed on the interstate and at the control access.
- 8) Cost of this unit is around \$74.00.



# Omni Concrete Surface mount Base

## Requirements:

- 1) Mounts to existing concrete slab.
- 2) Use 5/8" x 6" anchor bolts.
- 3) 3- 5/8" x 2 1/2" structural bolts maximum torque allowed is 40 ft-lbs.
- 4) The top pole is fasten with a locking wedge to keep the pole from turning.
- 5) This unit is normally installed by section 45 and contractors.
- 6) Cost for this unit is around \$140.00



## Omni Triangle Adaptable Base

**This unit mounts to existing triangle base that is already mounted in a slab.**

**1) Cost for this unit is around \$40.00**



**Omni 2" Concrete Square  
Tubing  
Anchor Base.(Kleen Break  
Model 425)**

**This unit mounts to existing slab.**

**This unit is typically used in the median for smaller signs (nothing larger than 9 square feet).**

- 1) Cost for this unit is around \$60.00**
- 2) The shear bolt, washer and locking wedge and be purchase separately.**
- 3) In a normal breakaway situation the shear bolt is the only thing that needs replacing.**



**Example of a concrete base that is mounted to an existing slab.**



**2 Inch Replacement  
Top Receiver.**

**This a replacement  
top for the 2 inch  
concrete base.**

**1) The cost for this  
unit is \$17.00**



**2" Square Tubing**  
**Anchor Base. (kleen**  
**Break)(Ground mount in**  
**wet concrete)**

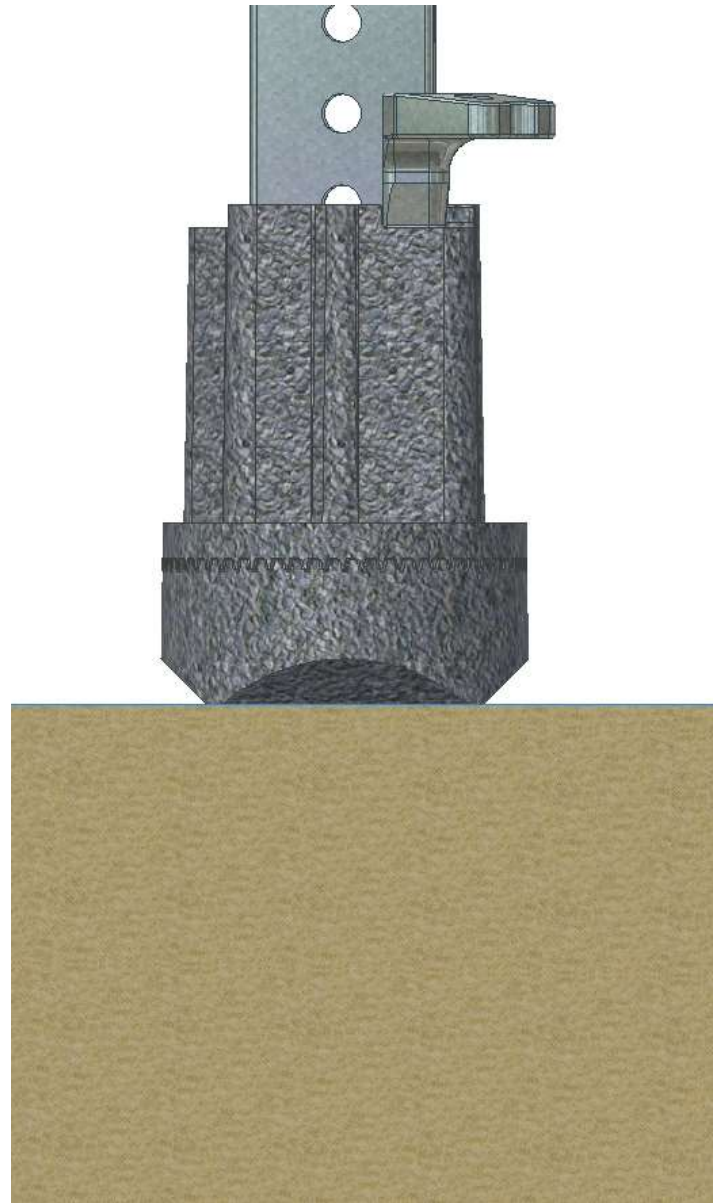
**This device mounts in wet concrete with a mowing pad.**

- 1) This unit mounts in at least a 6 inch thick slab.**
- 2) This is a good product that can be used in the roundabout locations.**
- 3) Cost for the complete unit is around \$61.00.**





**Diagram of an  
Installation in  
wet concrete .**



**Example of a square tubing breakaway that is flush mounted in wet concrete.**

**This is a perfect installation for signs in a roundabout, or when tripping hazards are a concern.**



**Typical ground  
mount installation.**



## 2" Square Tubing Anchor Base. (Ground mount).

This device mounts in the ground inside of a 2 ¼" x 2 ¼" x 3' square tubing that attaches with a corner bolt. This device can be pushed into the ground or you can dig a 2' 6" hole and then push down the remaining 6" to hold to device in place , then fill hole with concrete remembering to maintain the 3" stub height. For best results use the concrete method.

- 1) Cost for the complete unit is around \$61.00, the 3 foot piece is around \$2.30.



# Diagram of an Installation of a ground mount.



**Examples on how  
the 2 inch (kleen  
Break) system  
should break  
away.**



**This is another method of a breakaway is called Yielding.**



← Sunrise Blvd  
Old Black Canyon Hwy →





**This is a  
example of how  
the square  
tubing will work  
for the districts  
on a sign  
assembly  
installation.**



# Soil Stabilizing Sleeves.

This is a soil stabilizing sleeve that is used when the ground is not firm enough to support the sign properly.

1) These devices cost approximately \$16.00.



# Incident Management Signs

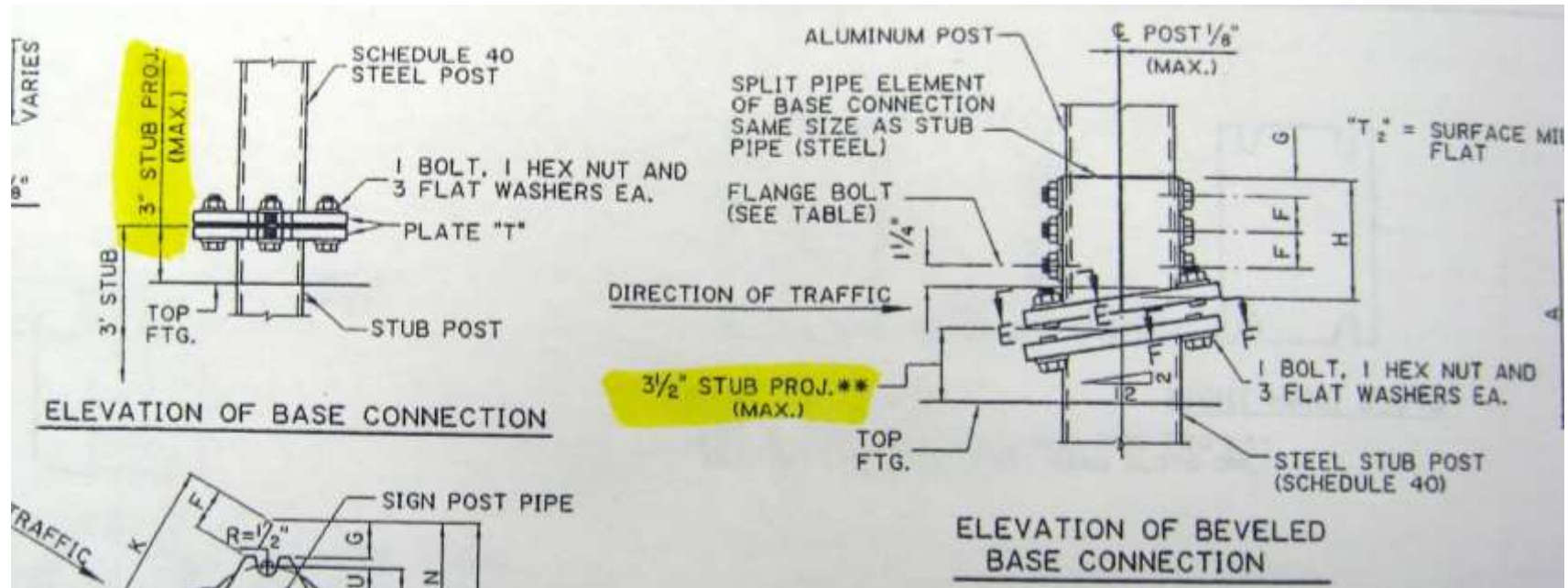
- 1) This support can be turned 90 degree to either display the message on the sign or to turn it so that it cannot be seen by the driver.



# Telespar Sign System Installation Video

<http://www.atc-mechanical.com/videos/telespar-installation/>





## Stub height requirements.

This photo shows the stub heights requirements for a flat and angel base support.

The Flat base needs to be 3" from grade.

The angle base needs to be 3 1/2" from the center.

FHWA says that you can be 4" from the back side.