



DID YOU KNOW?

It is key for all stakeholders to be "on board" with an access management plan and to fully understand the consequences of, and need for, guidance, structure and goal of the project.

Who Benefits From Access Management?

- Motorists
- Cyclists
- Pedestrians
- Business Owners
- Communities

What Are the Effects of Poor Access Management?

- Increase in crashes and crash rates
- Poor capacity corridor
- Increase in delays
- Reduced roadway efficiency



Want more information?

You can find information and videos on our project web page at <http://bit.ly/AccessManagement1>



Access Management

Helping to Improve
Traffic Flow and Safety



1201 Capitol Access Road, Baton Rouge, LA 70802
www.dotd.la.gov
(877) 452-3683



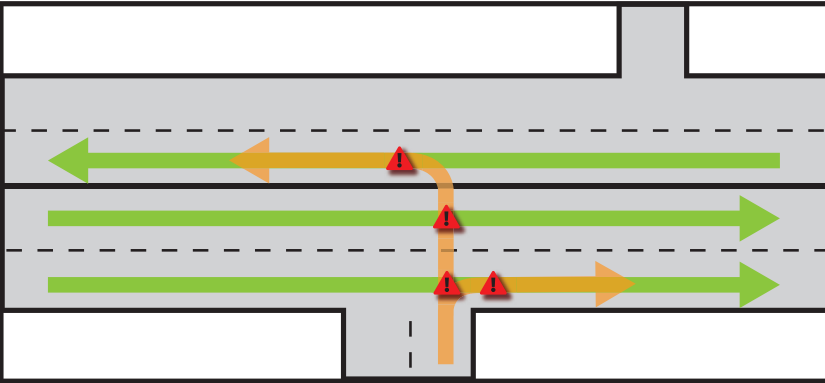
As roadways develop and traffic increases, congestion occurs, adding to delays and the probability of crashes. To alleviate these problems, the use of access management is practiced.

What is Access Management?

Access management is a technique used to improve efficiency and safety on roadways. It aims at focusing on the location, spacing, design of entrances, street intersections, median openings, and traffic signals by minimizing **conflict points**.

What Are Conflict Points?

Conflict points are areas where traffic flow is disrupted or points where motorists crossing, merging or diverging from a road or driveway may collide with another motorist. See diagram below.



What Are The Benefits?

- Reduces congestion
- Enhances safety by eliminating conflict points
- Spurs economic development by promoting efficient movement of goods and services



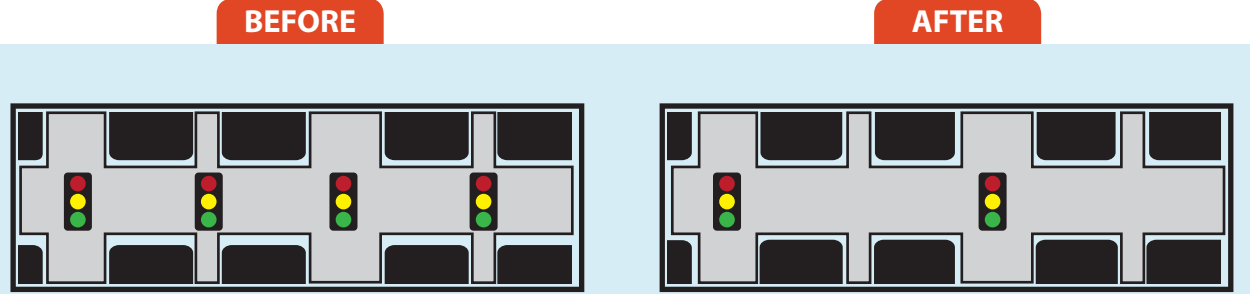
DID YOU KNOW?

It is important for you to get involved and attend public meetings and hearings and to voice your ideas and concerns.

ACCESS MANAGEMENT EXAMPLES:

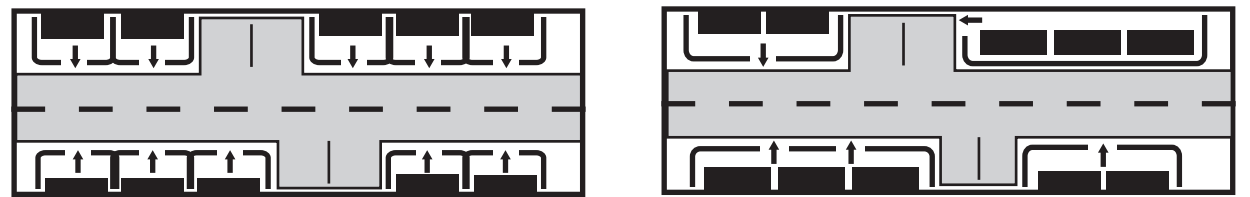
1 Traffic Signals and Intersections

Proper access management requires appropriate traffic signals and intersection spacing. Signals should be at a minimum of one-half mile apart. Intersection spacing along thoroughfares and streets should range from half of a mile to two miles.



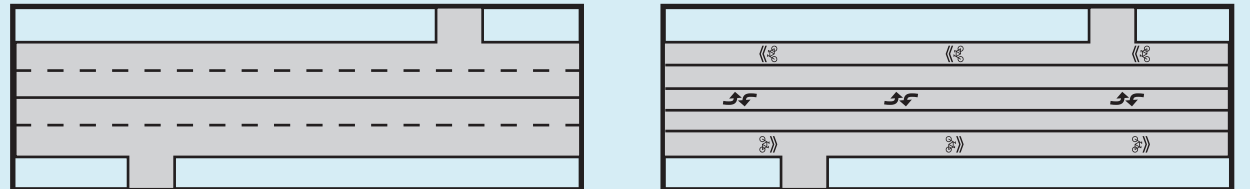
2 Driveways

Maintaining adequate spacing between commercial driveways is a critical aspect of access management. Research shows that roadways with a large number of closely spaced driveways are more problematic than those where driveway access is more limited.



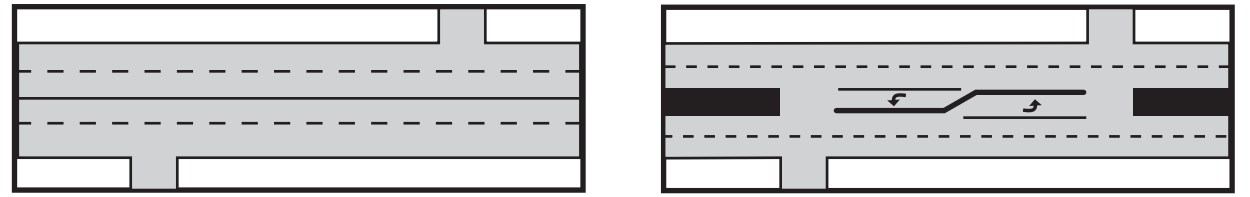
3 Turning Lanes

Exclusive turning lanes eliminate vehicles from obstructing free flowing traffic. This includes dedicated left- and right-turn lanes, as well as U-turns, and roundabouts.



4 Medians

One of the most effective access management tools is to use median treatments like raised medians.



5 Frontage Roads

Frontage roads are roadways that are constructed generally parallel to a freeway or other highway. They have the ability to serve local traffic and keep it from congesting the freeway mainlanes, in addition to moving traffic during crash situations on the mainlanes.

