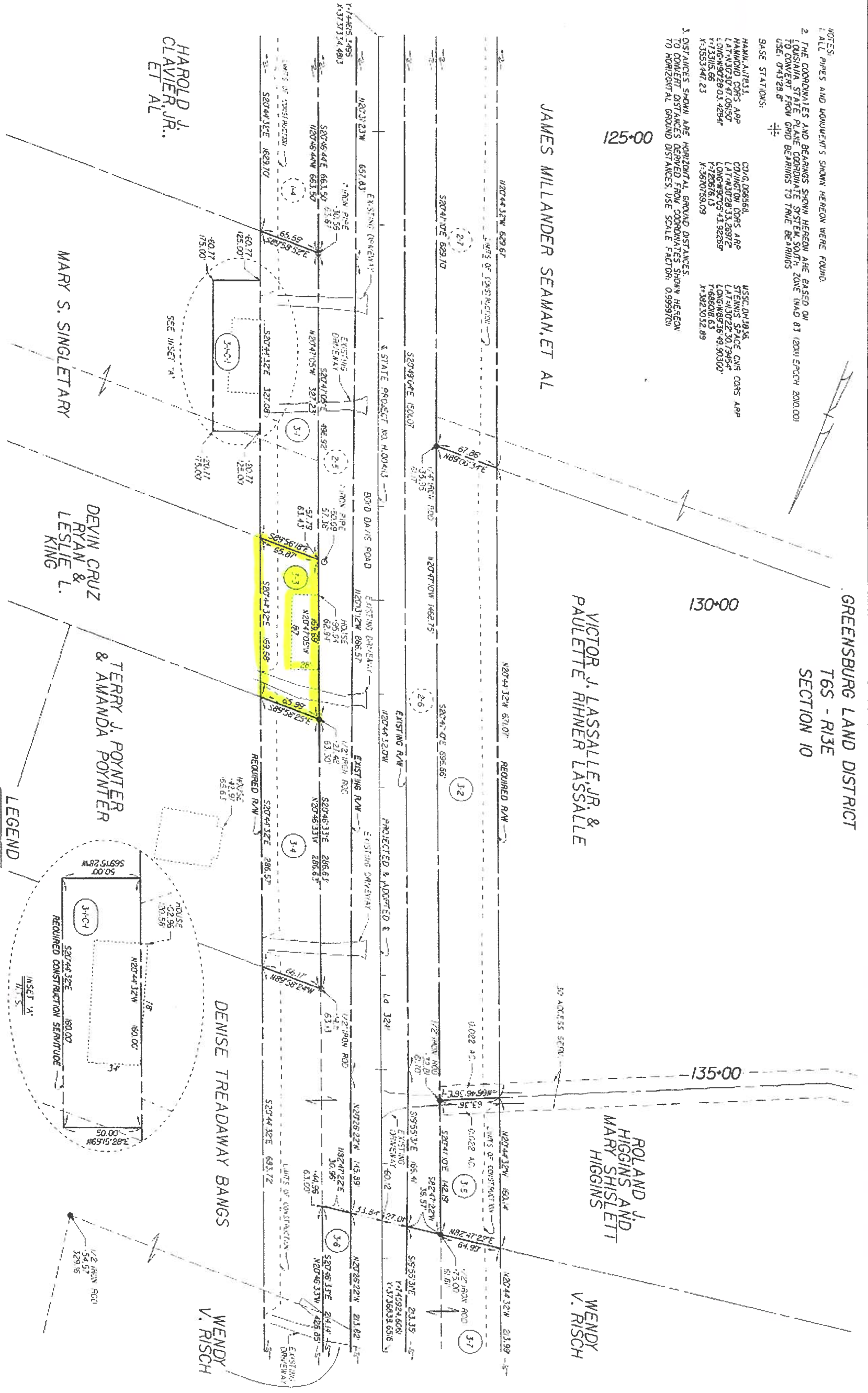


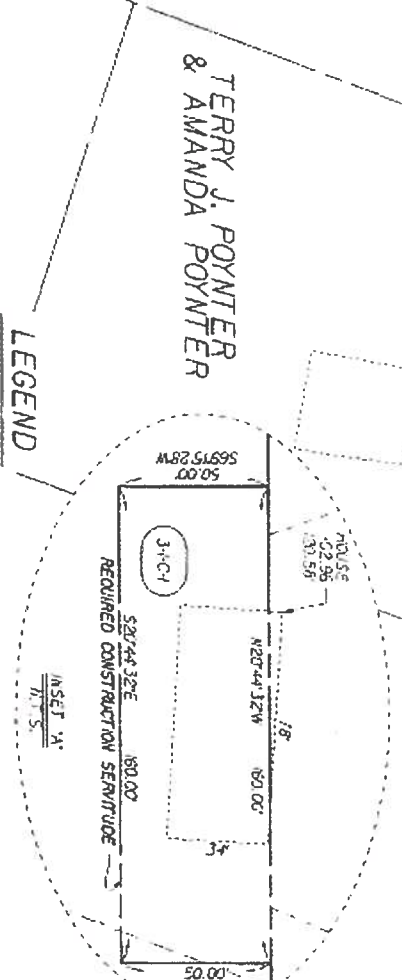


NOTES:
 1. ALL PIPES AND REQUIREMENTS SHOWN HEREON WERE FOUND.
 2. THE CONDUIT LINES AND DEBRIS ARE SHOWN HEREON AS BASED ON LOUISIANA STATE PLANE COORDINATE SYSTEM, SOUTH ZONE (NAD 83 (2011 EPOCH 2000.00)) TO EXCEPT FROM GRID BEHINDS TO TRUE BEHINDS USE: 0.9329 8'
 3. DISTANCES SHOWN ARE HORIZONTAL GROUND DISTANCES TO CORNER DISTANCES DERIVED FROM COORDINATES SHOWN HEREON TO HORIZONTAL GROUND DISTANCES USE SCALE FACTOR: 0.9999700

BASE STATIONS:
 HANU J. P. RESS
 HANU J. P. RESS
 COORDINATE CORNERS APP
 LAT: 30° 27' 47.05157
 LONG: 90° 22' 03.42944
 Y: 1733105.66
 X: 3553447.23
 USGC D. 1985
 STEVEN'S SPACE CORNERS APP
 LAT: 30° 27' 47.05157
 LONG: 90° 22' 03.42944
 Y: 1733105.66
 X: 3553447.23



PARCEL	OWNER	ACQUISITION	AREA
3-1	MARY S. SINGLETARY	INST. NO. 0518319 APRIL 6, 2014	0.461 AC.
3-2	VICTOR J. LASSALLE, JR. & PAULETTE RIHNER LASSALLE	INST. NO. 157913 SEPTEMBER 19, 2005	0.598 AC.
3-3	DEVIN CRUZ RYAN & LESLIE L. KING	INST. NO. 158915 OCTOBER 2, 2006	0.240 AC.
3-4	TERRY J. POYNTER & AMANDA POYNTER	INST. NO. 189951 JANUARY 10, 2013	0.408 AC.
3-5	ROLAND J. HIGGINS AND MARY SHISLETT HIGGINS	INST. NO. 1734832 JULY 29, 2009	0.219 AC.
3-6	WENDY V. RISCH	INST. NO. 0699074 FEBRUARY 2, 2008	0.415 AC.
3-7			



LEGEND

- EXISTING R/W
- REQUIRED R/W
- RIGHT OF WAY LINE
- CONTROL OF ACCESS
- RIGHT OF WAY & CONTROL OF ACCESS
- LIMITS OF CONSTRUCTION
- LOT LINE
- APPARENT PROPERTY LINE
- EXISTING SERVITUDE LINE
- SECTION LINE

DATE	REVISION DESCRIPTION	BY
9/9/19	ADDED HOME ON PARCEL 3-4	MJL
8/7/19	ADDED EXISTING DRIVEWAYS	MJL

RIGHT OF WAY MAP
 STATE PROJECT NO. H.004113
 LA 3241: LA 435 TO LA 404 LA 41
 ST. TAMMANY PARISH

COMPUTER CHECKED: S. BOURGEOIS
 M. LEDET
 CHECKED: S. BOURGEOIS
 M. LEDET
 DATE: 3/19/2019
 SCALE: 1"=50'

PARISH: ST. TAMMANY
 CONTROL SECTION: 852-33, 058-02 B 058-30
 STATE PROJECT: H.004113

T. BAKER
 S. L. LITTON
 L.L.C.