

THE COORDINATES AND BEARINGS SHOWN
HEREON ARE GRID AND ON THE LOUISIANA
COORDINATE SYSTEM SOUTH ZONE (NAD 83)

TO CONVERT FROM GRID BEARINGS
TO TRUE BEARING, USE $\ominus 00^{\circ}21'27''$

FILE NO.

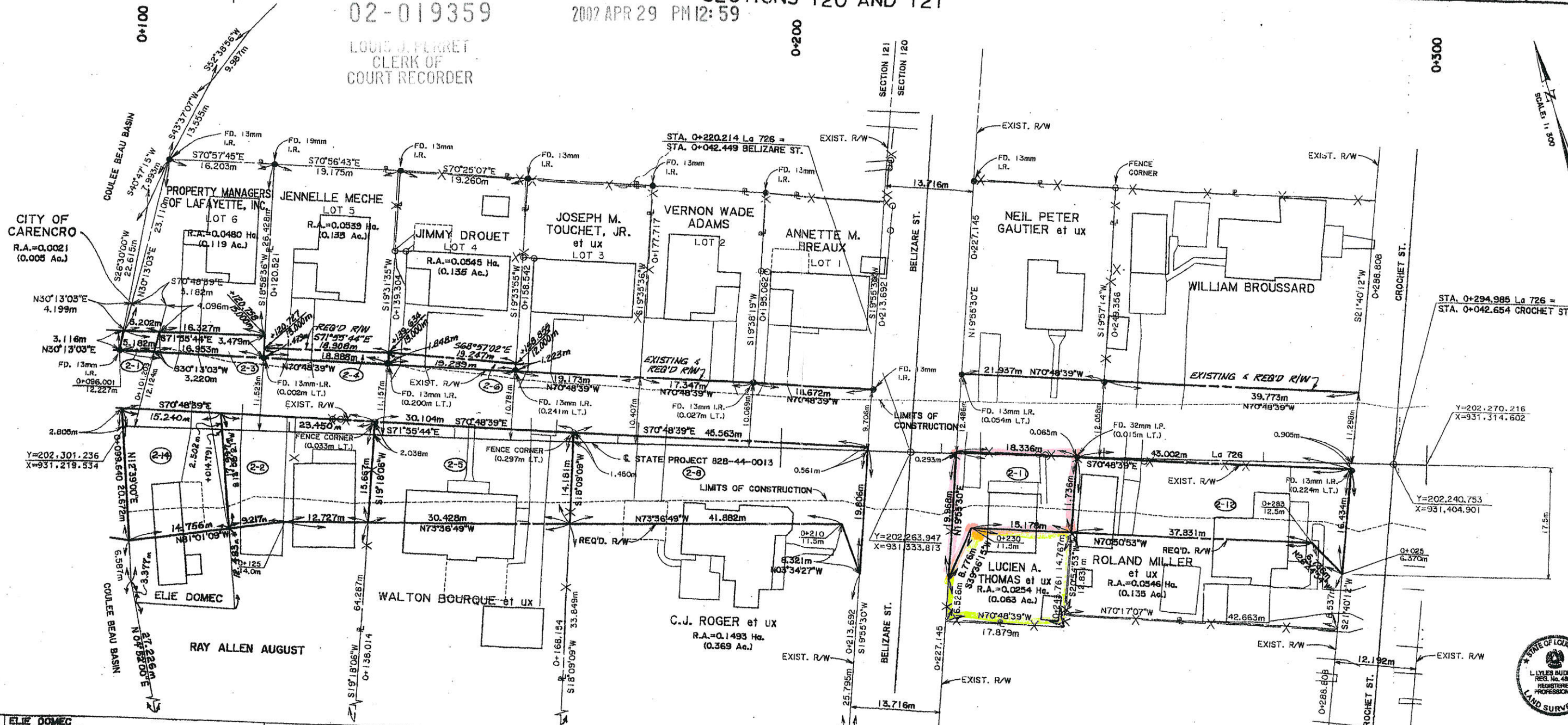
02-019359

LOUIS J. PERRET
CLERK OF
COURT RECORDER

CLERK OF COURT
LAFAYETTE, LA.
FILED AND RECORDED
SOUTHWEST LAND DISTRICT
T8S-R4E
SECTIONS 120 AND 121

2007 APR 29 PM 12:59

F.A.P.	STATE PROJECT	PARISH	SHEET
		LAFAYETTE	



PARCEL	OWNER	ACQUISITION	AREA
2-14	ELIE DOMEC	ENTRY NO. 215251 SEPT. 11, 1948	0.0289 Ha. (0.071 Ac.)
2-13			DELETED
2-12	ROLAND MILLER et ux	ENTRY NO. 78-029393 DEC. 11, 1978	0.0289 Ha. (0.071 Ac.)
2-11	LUCIEN A. THOMAS et ux	ENTRY NO. 668078 JUN. 28, 1976	0.0515 Ha. (0.127 Ac.)
2-10		ENTRY NO. 93-2874 JAN. 26, 1993	0.0226 Ha. (0.056 Ac.)
2-9			DELETED
2-8	C. J. ROGER et ux	ENTRY NO. 511116 JUL. 12, 1967	0.0606 Ha. (0.150 Ac.)
2-7			DELETED
2-6	JIMMY DROUET	ENTRY NO. 80-017327 AUG. 14, 1980	0.0030 Ha. (0.007 Ac.)
2-5	WALTON BOURQUE et ux	ENTRY NO. 203110 JUL. 24, 1947	0.0451 Ha. (0.112 Ac.)
2-4	JENNELLE MECHE	ENTRY NO. 315527 FEB. 24, 1955	0.0031 Ha. (0.008 Ac.)
2-3	PROPERTY MANAGERS OF LAFAYETTE, INC.	ENTRY NO. 00-005994 FEB. 16, 2000	0.0055 Ha. (0.014 Ac.)
2-2	RAY ALLEN AUGUST	ENTRY NO. 00-34553 AUG. 23, 2000	0.0016 Ha. (0.004 Ac.)
2-1	CITY OF CARENCRO	ENTRY NO. 85-037313 NOV. 5, 1985	0.0016 Ha. (0.004 Ac.)

LEGEND:
 RIGHT OF WAY LINE
 PROPERTY LINE

PLAT
 SEE PLAT FILING CABINET
 #02-19359

4-11-01 REV. PARCEL 2-2; ADDED 2-14
 1-3-01 REV. PARCELS 2-4 & 2-6. DELETED PARCELS 2-7, 2-9, 2-10 & 2-13. JLO/SMW

STATE OF LOUISIANA
 DEPARTMENT OF TRANSPORTATION & DEVELOPMENT

RIGHT OF WAY MAP
 STATE PROJECT NO. 828-44-0013
 F.A.P. NO. STP-2800(501)
 La. 182 - 1-49 (CARENCRO)
 LAFAYETTE PARISH
 La 726

SHREAD - KUYRKENDALL & ASSOCIATES, INC. BATON ROUGE, LA.
 L. LYLES BUDDEN PROFESSIONAL LAND SURVEYOR