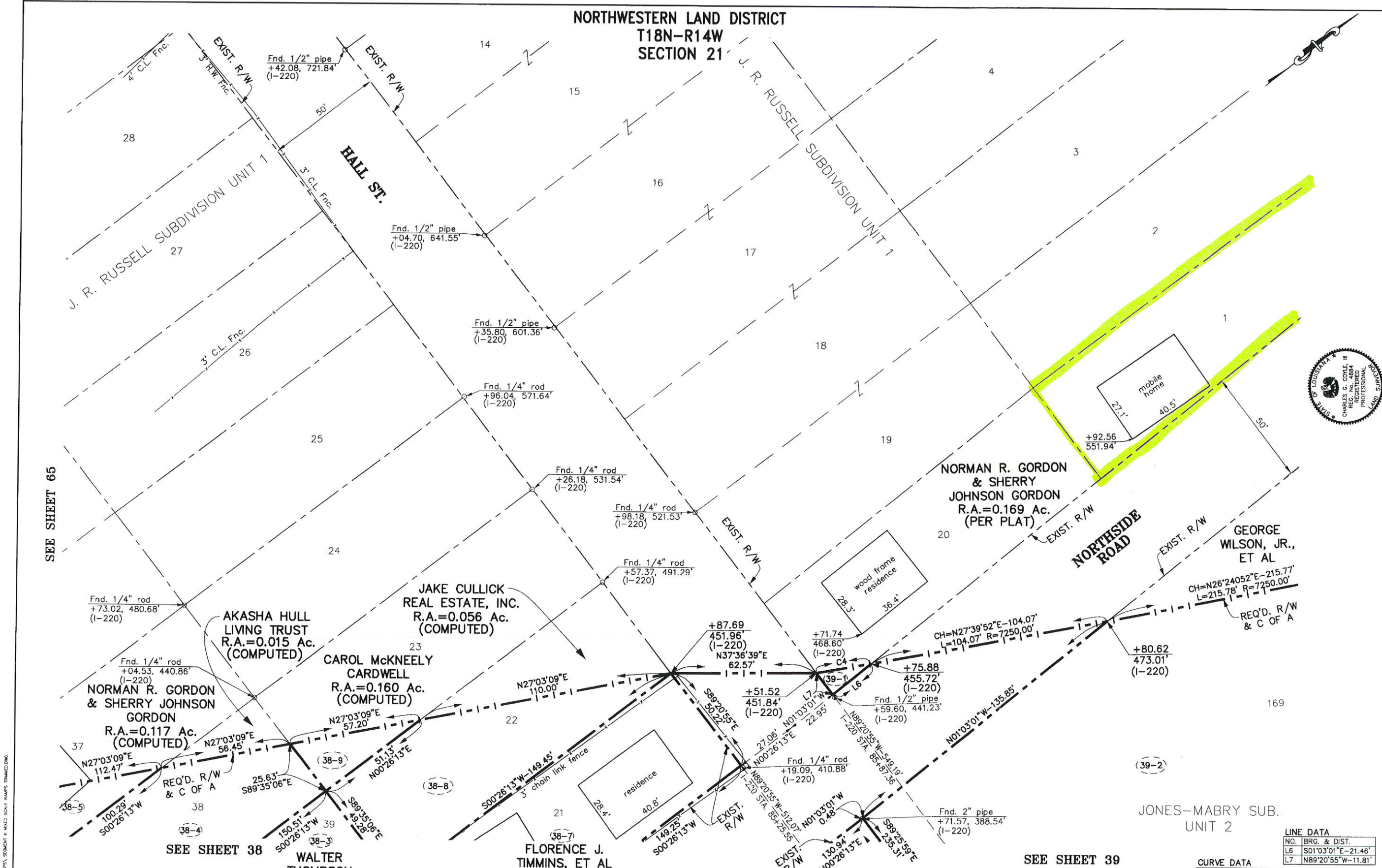


NORTHWESTERN LAND DISTRICT
T18N-R14W
SECTION 21

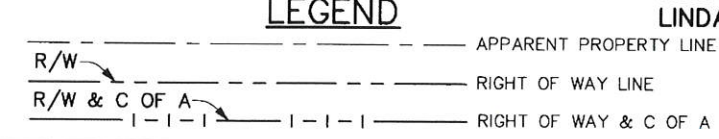


SEE SHEET 65

SEE SHEET 38

SEE SHEET 39

NOTE: ALL PIPES AND MONUMENTS SHOWN HEREON WERE FOUND.



ROBERT R. ROBINSON &
LINDA LOUISE ROBINSON

NOTES:

1) THE COORDINATES & BEARINGS SHOWN HEREON ARE GRID AND ARE ON THE LOUISIANA COORDINATE SYSTEM, NAD 83, NORTH ZONE. DISTANCE SHOWN ARE HORIZONTAL GROUND DISTANCES.

2) TO CONVERT FROM GRID BEARINGS TO TRUE BEARINGS, USE CONVERGENCE ANGLE = $-00^{\circ}41'13''$

PARCEL	OWNER	ACQUISITION	AREA
66-4			DELETED
66-3			DELETED
66-2			DELETED
66-1			DELETED

LINE DATA

NO.	BRG. & DIST.
L6	S01°03'01"E-21.46'
L7	N89°20'55"W-11.81'

CURVE DATA

NO.	ARC LENGTH	RADIUS	CHORD BRG. & DIST.
C4	24.19'	7250.00'	N28°10'16"E-24.19'



COYLE ENGINEERING CO., INC.
BOSSIER CITY, LOUISIANA
(318) 746-8987

DATE: JUNE 17, 2013
COMPUTED BY: CGCC
DRAWN BY: LYS
SCALE: 1" = 20'
FILE NO. 05-17-1-031
RW SHEET NO. 66

PARISH: CADDO
FEDERAL PROJECT NO.:
STATE PROJECT NO.: 455-09-0001 (H. 003495)

STATE PROJECT NO. 455-09-0025 (H. 003515)
I-49 NORTH (I-220 TO MARTIN LUTHER KING DRIVE)
CADDO PARISH
I-49

RIGHT OF WAY MAP

RIGHT OF WAY MAP

REVISIONS

DATE	DESCRIPTION	BY
10/14/2013	DELETED PARCELS 38-11, 66-1, 66-2, 66-3 AND 66-4	LYS/CEC

FILE NO. 05-17-1-031
RW SHEET NO. 66